

# **ADDENDUM # 1**

for

**OFFICE AND MAINTENANCE FACILITY FOR:  
LINCOLN COUNTY HIGHWAY DEPARTMENT  
19033**

March 16, 2020



**Knoxville Office  
2607 Kingston Pike, Suite 5  
Knoxville, TN 37919  
Fax 865. 584.1860  
Phone 865.694.9000**



## OFFICE AND MAINTENANCE FACILITY FOR: LINCOLN COUNTY HIGHWAY DEPARTMENT

### ADDENDUM #1

March 16, 2020

All changes, modifications and clarifications listed here-in shall be included in the work of the contract as if part of the contract documents. The intent of this document and all contract documents are to provide the Owner with a complete, fully functioning building, with all systems fully functional and in compliance with all applicable codes.

#### General:

#### Specifications:

- 1.1 Section 00 30 99 – BID PACKAGES – Clarifications: See the attached clarification list page 1 of 1 dated March 12, 2020.
- 1.2 Section 07 25 00 - Weather Barriers – Substitution of Product 2.1: DensElement from Georgia-Pacific Gypsum is added as an alternate for the specified product.
- 1.3 Section 10 21 13.17 – Phenolic Toilet Compartments – Substitution of Product 2.1: Hiny Hiders Solid Plastic from Scranton Products is added as an available Manufacturer.
- 1.4 Section 13 34 19 – Metal Building Systems – List of available Manufacturers 2.1: Basis of design is Varco Pruden Buildings. Additional accepted manufactures must meet the requirements as set forth in this specification section.

#### Drawings:

- 1.5 Bid Documents A511 – 1/A511 – Notes “1 1/2” metal deck / 5/8” Densdeck. These notes are incorrect. PEMB Manufacturer is to provide the roofing system.
- 1.6 Bid Documents A501 – 2/A501 – The missing detail nomenclature at column line “D” should be 1/A510 Similar.
- 1.7 Bid Documents – All Sheets where insulated metal panels are noted as R-10. This note is incorrect. See Specification Section 13 34 19 2.5 A. 1. R-Value: R-19 is correct.
- 1.8 Bid Documents A510 – 1/A510 – The Designer intends to raise the building pad elevation 1.5” to allow the exterior metal panels to continue below the FFE for seal against water intrusion.
- 1.9 Bid Documents – R-1 – 1/R-1 Footing Detail dated. 3/16/19 added to show perimeter insulation and metal panel siding/sidewalk condition.

**Attachments:**

**General:**

None

**Specifications:**

Section 00 30 99 – Clarifications – Page 1 of 1 dated March 12, 2020.

**Drawings:**

R-1 – 1/R-1 Footing Detail dated. 3/16/19.

**RFIs – Questions and Responses:**

NONE

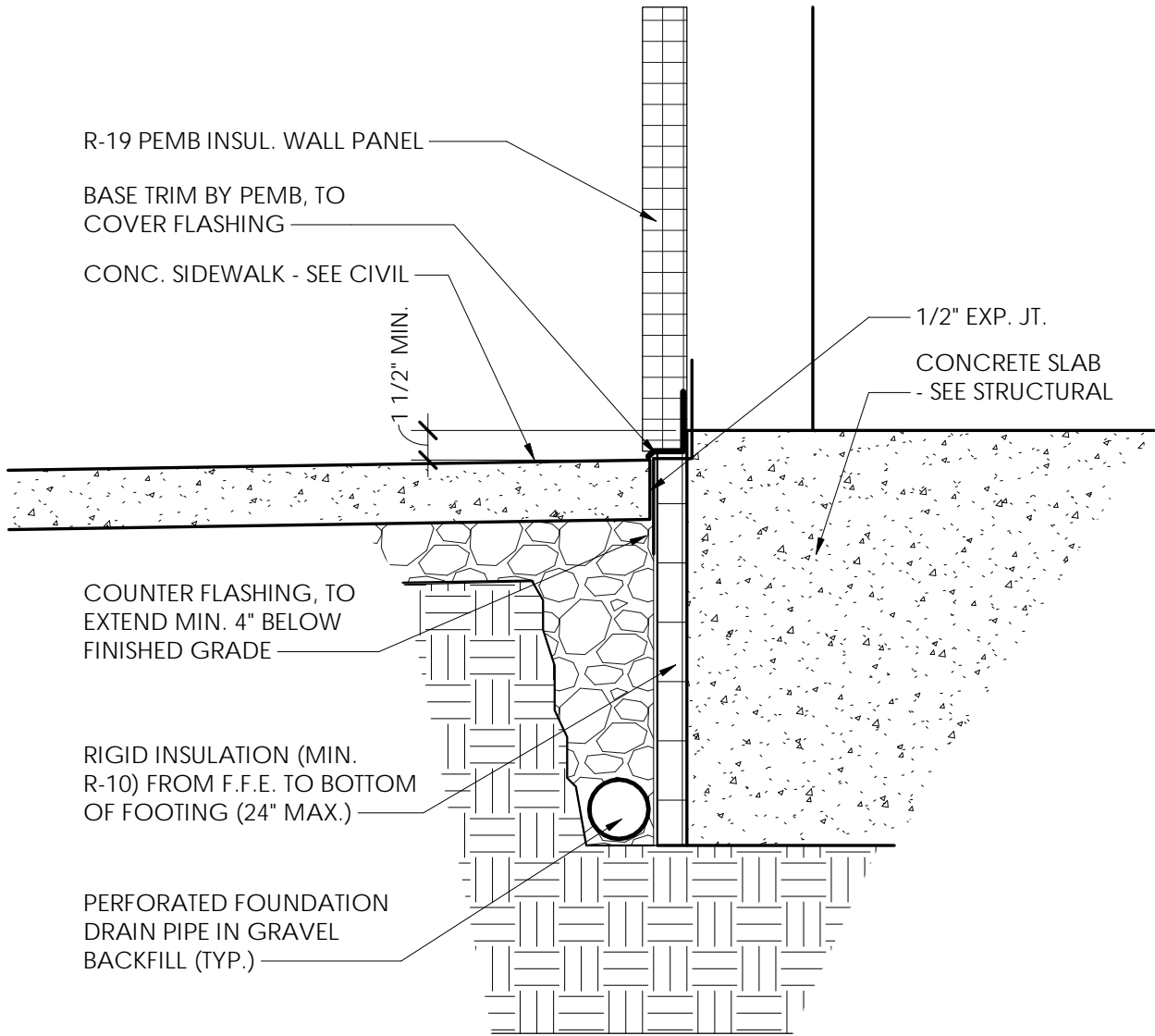
**END OF ADDENDUM #1**



March 12, 2020

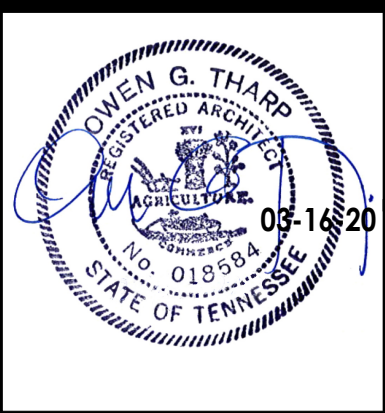
**OFFICE AND MAINTENANCE FACILITY  
LINCOLN COUNTY HIGHWAY DEPARTMENT  
BID PACKAGE SECTION 00 30 99 CLARIFICATIONS**

- 1) BP #3 SHALL INCLUDE SETTING OF ALL PIPE BOLLARDS FURNISHED BY OTHERS, INSTALL THE MECHANICAL UNIT ENCLOSURE & 4 X 4 STEEL POST FURNISHED BY OTHERS, FOUNDATION DRAINS WITH FILTER FABRIC AT OIL PIT, THE TACTILE WARNING SURFACE SHOWN AT THE OIL PIT AND FILL UNDERNEATH THE CONCRETE SLAB.
- 2) BP #4 SHALL INCLUDE ALL EPOXY DOWELS WHERE SHOWN IN CMU WALLS.
- 3) BP #5 SHALL FURNISH ALL PIPE BOLLARDS, 4 X 4 STEEL POST AT MECHANICAL UNIT ENCLOSURE INSTALLED BY OTHER.
- 4) BP #9 SHALL INCLUDE THE KV ROLL-EZY BEARING TRACK SYSTEM WITH LOCK AT OFFICE 118.
- 5) BP #10 SHALL INCLUDE THE 1 ½" METAL DECKING OVER THE TRUSSES, THE 5/8" DENSDECK OVER THE METAL DECKING AND THE 5/8" DENSGLASS SHEATING.
- 6) BP #14 SHALL INCLUDE SEALING OF CONCRETE FLOORS AND PAINTED FLOOR STRIPING.
- 7) BP #15 SHALL INCLUDE THE R-30 RIGID INSULATION, THE STANDING SEAM METAL ROOF, THE GUTTERS/DOWNSPOUTS AND THE R-10 INSULATED METAL PANEL AT THE OFFICE AREA.
- 8) BP #16 SHALL INCLUDE ALL CONCRETE REQUIRED FOR YOUR WORK.
- 9) BP #17 SHALL INCLUDE ALL CONCRETE REQUIRED FOR YOUR WORK, HDPE DOWNSPOUT DRAINS AND THE EMERGENCY EYE WASH & SHOWER.
- 10) BP #18 SHALL INCLUDE ALL CONCRETE REQUIRED FOR YOUR WORK.
- 11) BP #19 SHALL INCLUDE ALL CONCRETE REQUIRED FOR YOUR WORK AND THE CAPPED 3" PVC THRU-WALL SLEEVES SHOWN IN THE CORNERS OF THE SHOP FOR FUTURE USE.



**1** FOOTING DETAIL  
 R-1 1" = 1'-0"

TYPICAL FOOTING DETAIL		
Date	03/16/20	
PROJECT INFORMATION		
No.	Date	Description
1	03/16/20	REV #1



**COPE**  
 architecture

2607 Kingston Pike, Suite 5    tel: 865.694.9000  
 Knoxville, Tennessee 37919    www.cope-associates.com

LINCOLN COUNTY HIGHWAY DEPARTMENT

Dwg No. **R-1**  
 Project No. 19033